

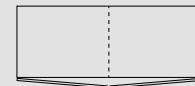
Sideboards w/push drawers + doors. Height 70 cm



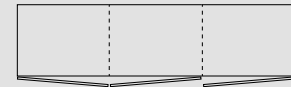
Description + drawing	Dimensions (cm)		
	W	D	H
2 doors item no. 6337	102	40	70
2 doors, 2 drawers item no. 6338	102	40	70
3 doors + 3 drawers item no. 6343	151	40	70
3 doors item no. 6344	151	40	70
4 doors + 4 drawers item no. 6345	200	40	70
4 doors item no. 6346	200	40	70

--- Wood shelf inside

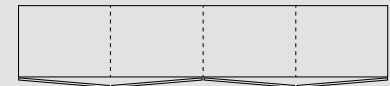
Overview of which doors are left and right hinged on all ZET cabinets



2 sections



3 sections



4 sections

Additional information

Plate thickness: 2 cm.

Steel profile: 2x2 cm.

Removable wooden shelves
- max. 20 kg - evenly distributed.

Adjustable shelves

The shelves can be adjusted a little bit up/down from the standard position.

Ash is standard - Oak + 25%
Stainless steel = + 10%

All prices are purchase prices in Euro.
We accept no liability for any errors or omissions.

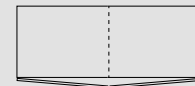
Sideboards w/push drawers + doors. Height 85 cm



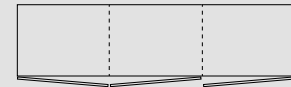
Description + drawing	Dimension (cm)		
	W	D	H
2 doors item no. 6301	102	40	85
3 doors, 2 drawers item no. 6302	102	40	85
3 doors item no. 6303	151	40	85
5 doors, 2 drawers item no. 6304	151	40	85
4 doors item no. 6305	200	40	85
6 doors, 4 drawers item no. 6306	200	40	85

--- Wood shelf inside

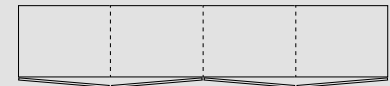
Overview of which doors are left and right hinged on all ZET cabinets



2 sections



3 sections



4 sections

Additional information

Plate thickness: 2 cm.

Steel profile: 2x2 cm.

Removable wooden shelves
- max. 20 kg - evenly distributed.

Adjustable shelves

The shelves can be adjusted a little bit up/down from the standard position.

Ash is standard - Oak + 25%
Stainless steel = + 10%

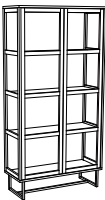

All prices are purchase prices in Euro.
We accept no liability for any errors or omissions.

Glass cabinet w/push drawers + doors

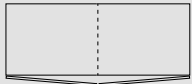


The glass doors are mounted on the inner side of the corpus.
Only on item no. 6347 + 6348!



Description + drawing	Dimensions (cm)		
	W	D	H
Item no. 6347 2 doors 	102	40	200
Item no. 6348 4 doors + 2 drawers 	102	40	200

Overview of which doors are left and right hinged on all ZET cabinets



2 sections

Additional information

Plate thickness: 2 cm.

Steel profile: 2x2 cm.

Removable glass shelves.
- max. 12 kg - evenly distributed.

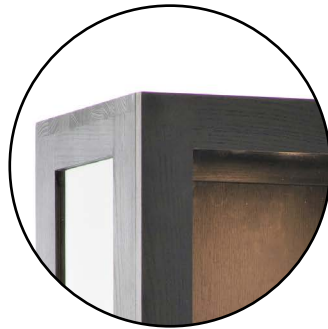
LED light in top of the cabinet.

Adjustable shelves.
The shelves can be adjusted a little bit up/down from the standard position.

Ash is standard - Oak + 25%
Stainless steel = + 10%

All prices are purchase prices in Euro.
We accept no liability for any errors or omissions.

Glass cabinet w/handles on the glass doors.



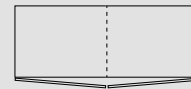
The glass doors are mounted on the outer side of the corpus.
Only on item no. 6347 + 6348!

description + drawing	Dimension (cm)		
	W	D	H
2 doors item no. 63570	102	40	157
2 doors item no. 63470	102	40	200
4 doors, 2 drawers item no. 63480	102	40	200
4 doors item no. 63530	102	40	200
6 doors, 3 drawers item no. 63540	151	40	200
6 doors item no. 63520	151	40	200

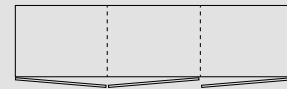
● Handles - See options on page. 31

--- Wood shelf inside

Overview of which doors are left and right hinged on all ZET cabinets



2 sections



3 sections

Additional information

Plate thickness: 2 cm.

Steel profile: 2x2 cm.

Removable glass shelves.
- max. 12 kg - evenly distributed.

LED light in top of the cabinet.

Adjustable shelves.
The shelves can be adjusted a little bit up/down from the standard position.

Soft close
The glass doors with handles are with soft close.

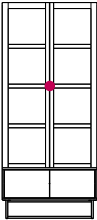
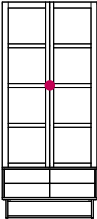
Ash is standard - Oak + 25%
Stainless steel = + 10%

All prices are purchase prices in Euro.
We accept no liability for any errors or omissions.

Glass cabinet w/handles on the glass doors.

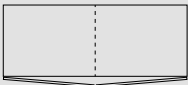


One of the handle options is this T-handle (BT)
– see more info on page 31.

Description + drawing	Dimensions (cm)		
	W	D	H
4 doors item no. 6355O 	102	40	232
2 doors, 4 drawers varenr. 6356O 	102	40	232

● Handles - See options on page. 31

Overview of which doors are
left and right hinged on all
ZET cabinets



2 sections

Additional information

Plate thickness: 2 cm.

Steel profile: 2x2 cm.

Removable glass shelves.
- max. 12 kg - evenly distributed.

LED light in top of the cabinet.

Adjustable shelves
The shelves can be adjusted a little bit
up/down from the standard position.

Soft close
The glass doors with handles are with
soft close.

HIFI sideboard with textile and "push" doors/drawers



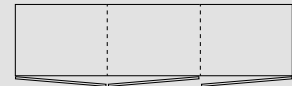
Description + drawing	Dimensions (cm)		
	W	D	H
item no. 6362 2 doors (veneer) 1 door (w/textile) 3 cable holes in the back	151	40	55
item no. 6363 2 doors (w/textile), 1 open space 3 cable holes in the back	151	40	55
item no. 6364 3 doors (w/textile) 3 cable holes in the back	151	40	55
item no. 6365 2 doors (w/textile), 2 open space 4 cable holes in the back	200	40	55
item no. 6366 2 doors (veneer) 2 doors (w/textile) 4 cable holes in the back	200	40	55

--- Wood shelf inside

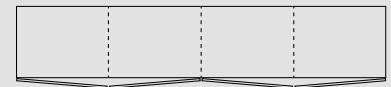


Please note that we can not guarantee that the HIFI fabric works with all infrared devices.

Overview of which doors are left and right hinged on all ZET cabinets



3 sections



4 sections

Additional information

Plate thickness: 2 cm.

Steel profile: 2x2 cm.

Removable wooden shelves
- max. 20 kg - evenly distributed.

Adjustable shelves
The shelves can be adjusted a little bit up/down from the standard position.

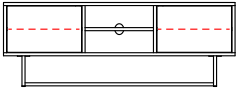



Ash is standard - Oak + 25%
Stainless steel = + 10%

All prices are purchase prices in Euro.
We accept no liability for any errors or omissions.

HIFI sideboard "push" doors/drawer

—

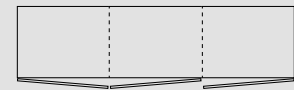


Description + drawing	Dimensions (cm)		
	W	D	H
<p>Item no. 6373</p> <p>2 doors (veneer)</p> <p>1 open space</p> <p>3 cable holes in the back</p> 	151	40	55
<p>Item no. 6374</p> <p>3 doors (veneer)</p> <p>3 cable holes in the back</p> 	151	40	55
<p>Item no. 6375</p> <p>2 doors (veneer)</p> <p>2 open spaces</p> <p>4 cable holes in the back</p> 	200	40	55
<p>Item no. 6376</p> <p>4 doors (veneer)</p> <p>4 cable holes in the back</p> 	200	40	55

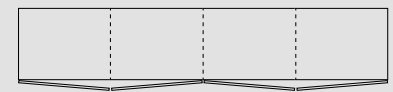
--- Wood shelf inside

Overview of which doors are left and right hinged on all ZET cabinets

—



3 sections



4 sections

Additional information

—

Plate thickness: 2 cm.

Steel profile: 2x2 cm.

Removable wooden shelves

- max. 20 kg - evenly distributed.

Adjustable shelves

The shelves can be adjusted a little bit up/down from the standard position.

Ash is standard - Oak + 25%

Stainless steel = + 10%

All prices are purchase prices in Euro.

We accept no liability for any errors or omissions.

Wallmounted HIFI sideboard with textile and "push" doors/drawers



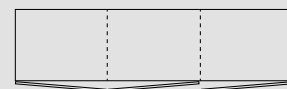
Description + drawing	Dimensions (cm)		
	W	D	H
item no. 6362W 2 doors (veneer) 1 door (w/textile) 3 cable holes in the back	151	42	35
item no. 6363W 2 doors (w/textile), 1 open space 3 cable holes in the back	151	42	35
item no. 6364W 3 doors (w/textile) 3 cable holes in the back	151	42	35
item no. 6365W 2 doors (w/textile), 2 open space 4 cable holes in the back	200	42	35
item no. 6366W 2 doors (veneer) 2 doors (w/textile) 4 cable holes in the back	200	42	35

--- Wood shelf inside

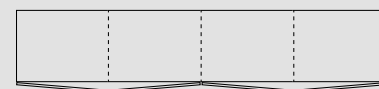


Please note that we can not guarantee that the HIFI fabric works with all infrared devices.

Overview of which doors are left and right hinged on all ZET cabinets



3 sections



4 sections

Additional information

Plate thickness: 2 cm.

Steel profile: 2x2 cm.

Removable wooden shelves
- max. 20 kg - evenly distributed.

Adjustable shelves
The shelves can be adjusted a little bit up/down from the standard position.

Ash is standard - Oak + 25%
Stainless steel = + 10%

All prices are purchase prices in Euro.
We accept no liability for any errors or omissions.

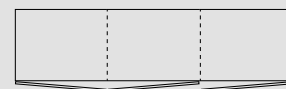
Wallmounted HIFI sideboard "push" doors/drawer



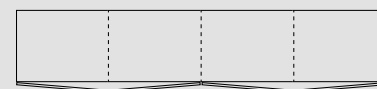
Description + drawing	Dimensions (cm)		
	W	D	H
item no. 6373W 2 doors (veneer) 1 open space 3 cable holes in the back	151	42	35
item no. 6374W 3 doors (veneer) 3 cable holes in the back	151	42	35
item no. 6375W 2 doors (veneer) 2 open spaces 4 cable holes in the back	200	42	35
item no. 6376W 4 doors (veneer) 4 cable holes in the back	200	42	35

--- Wood shelf inside

Overview of which doors are left and right hinged on all ZET cabinets



3 sections



4 sections

Additional information

Plate thickness: 2 cm.

Steel profile: 2x2 cm.

Removable wooden shelves

- max. 20 kg - evenly distributed.

Adjustable shelves

The shelves can be adjusted a little bit up/down from the standard position.

Ash is standard - Oak + 25%

Stainless steel = + 10%

All prices are purchase prices in Euro.

We accept no liability for any errors or omissions.



Images for guiding purpose only!

The wood structure and colour will vary from ash and oak.

We therefore recommend using the wood samples/exhibition furniture to get a more accurate impression.

WOOD COLOURS



ASH C3 / OAK C3
Lacquered

We treated this wood with lacque.

C3 are only made for products without patination.



ASH C4 / OAK C4
Natural oiled

We treated this wood with our 'Natural oil'.



ASH C6 / OAK C6
White oiled

We treated this wood with our 'White oil'.



ASH C8 / OAK C8
Soaped

We treated this wood with soap.



ASH C11 / OAK C11
Dark grey oiled

We treated this wood with our 'Dark grey oil'.



ASH C12 / OAK C12
Antique brown oiled

We treated this wood with our 'Antique brown oil'.



ASH C13 / OAK C13
Light grey oiled

We treated this wood with our 'Light grey oil'.



ASH C14 / OAK C14
Black stained & oiled

We treated this wood with black stain, and treated it with a wax oil.

C14 is for legs and storage furniture only!



ASH C15 / OAK C15
Mocca brown oiled

We treated this wood with our 'Mocca brown oil'.



ASH C16
Warm white oiled

We treated this wood with our 'Warm white oil'.

C16 is only for ash



ASH C20 / OAK C20
Grey brown oiled

We treated this wood with our 'Grey brown oil'.



ASH C44 / OAK C44
Black matt lacquered

We treated this wood with black stain, and treated it with matt lacque.

C44 is only for plates and can only be made for products without patination.



For more information about maintenance, please visit our website:
WWW.KRISTENSEN.COM



We also offers our own repairolls for our products
- contact us if you need a pricelist.

Ash is standard - Oak + 25%
Stainless steel = + 10%

All prices are purchase prices in Euro.
We accept no liability for any errors or omissions.

MAINTENANCE



To do..

..We recommended that the daily cleaning of oiled furniture is with a damp cloth followed by a dry cloth.

..When you treat your tabletop with a care product, you should always treat the underside of the plate too. Otherwise you risk it to bend.

..Cleaning, grinding and processing of wood must always be along the grains.

..Remember sometimes to leave the table and leaves uncovered, this allows the colors to be synchronized.

..indoor furniture can be damaged if left outdoors or in damp and unheated-rooms.

..In some cases you can repair small cracks and dents. Add a few drops of water to the injury. Sand it slightly with grain 100-120. Finish with a maintenance treatment.



Not to do..

..Do never use abrasives, bleach or ammonia to clean your furniture.

..Do not leave hot or humid things on the wood, it makes blotches.

..Do not leave the wood covered with airtight materials extended periods of time. The wood needs to breathe.

..Do not let the furniture in direct sunlight - the wood dries out. Alternatively you can turn the furniture 180 degrees once a month - to even out the color difference.

..End wood absorbs all sorts of liquid so we recommend you only to wipe it slightly when you clean it.

TIP:

Treat your furniture with a careproduct even before you start using it!

Find more info about maintenance on our website:
www.kristensen.com